

❖ ❖ ❖ **Coming Events** ❖ ❖ ❖

Fall 2000

Select Student Art Exhibit

November-December, 2000
Fine Arts Theater

Jazz Combo Concert

Tuesday, Nov. 21 • 8 PM
Fine Arts Theater

Jazz Band Concert

Thursday, Nov. 30 • 8 PM
Fine Arts Theater

Dinner & Dancing in December

Chamber Choir & Jazz Singers
Friday & Saturday, Dec. 1-2 • 7:30 PM
Brophy's Place • \$25 per person

Concert Band Concert

Tuesday, Dec. 5 • 8 PM
Fine Arts Theater

Community Chorale

Thursday, Dec. 7 • 8 PM
Fine Arts Theater

Chamber & Jazz Singers

Friday, Dec. 8
Missouri Botanical Gardens

Barbershop Concert

Featuring Jefferson Jazz Singers
Saturday, Dec. 9 • 7:30 PM
Fine Arts Theater

Spring 2001

Non-Traditional Printmaking Workshop & Exhibit

January - February, 2001
Fine Arts Theater Studios and Gallery

"Quilters" Play Production

By Molly Newman & Barbara Damashek
Auditions: Jan 18-19, 2-4 p.m.
Production: Thursday, March 1 • 11 AM
Fri. & Sat., March 2 & 3 • 8 PM
Fine Arts Theater • Students \$4, Adults \$5

Spring Children's Theatre Traveling Production

Auditions: Feb. 8-9, 2-4 p.m. and Feb. 10, Noon-2 p.m.
Production: April 11 through April 27 at different elementary schools in the bi-state area (Performance at Jefferson College on Saturday, April 21, 2001, 2 p.m.)

Scottish Festival

Sunday, April 1, 2001 • 2:30 PM
Fine Arts Theater

Jefferson College Annual High School Art Exhibit

April 2001
Fine Arts Theater Gallery

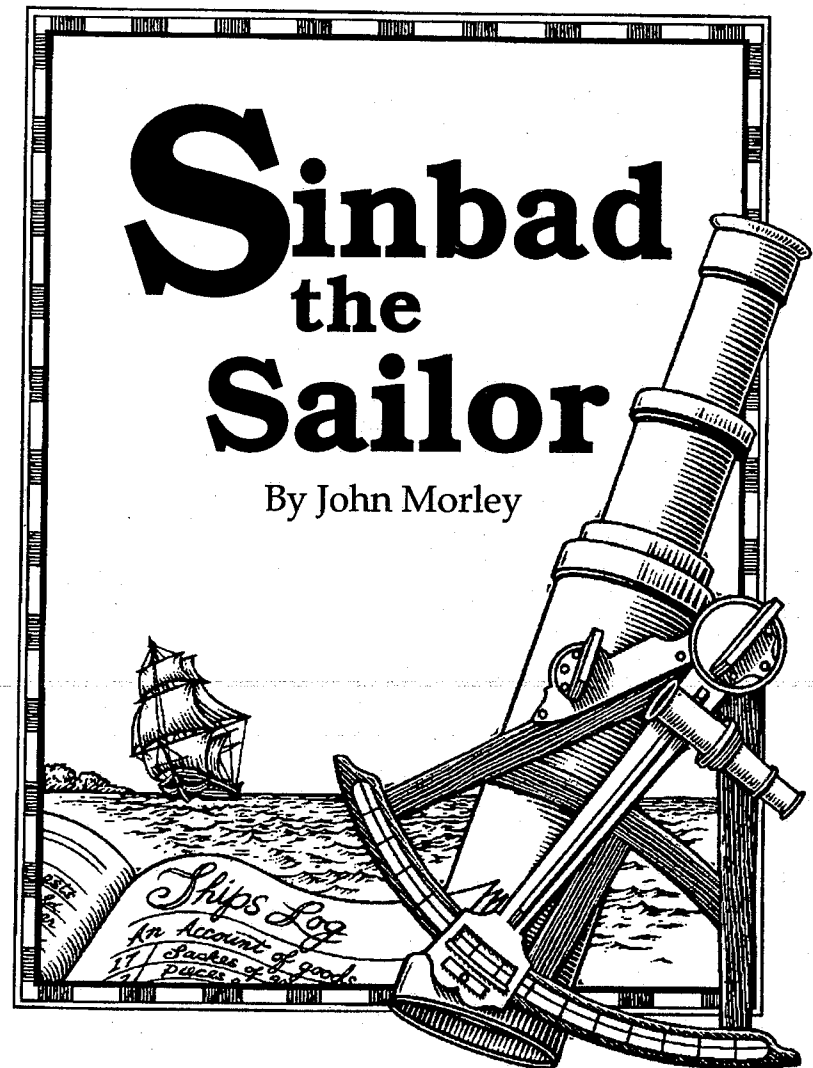
Jefferson College Annual Student Art Exhibit

April - May, 2001
Fine Arts Theater Gallery

Some events are made possible by **MAC A&E**
MISSOURI ARTS COUNCIL

It is the policy of Jefferson College that no person shall, on the basis of age, ancestry, color, creed, disability, gender, national origin, race, or religion, be subject to discrimination in employment or in admission to any educational program or activity of the College. NOTE: If accommodations for a disability are needed, please contact Sunday Heckethorn at (636) 797-3000, 789-3000, or 942-3000, ext. 169. TDD users may call (636) 789-5772.

Jefferson College
Drama Department Presents



November 15-18, 2000

Directed by Wes Robertson & Rebecca Ellison

This play presented by special arrangements with
Samuel French Ltd. London

Time: In the Mystical Past

Act I

- Scene 1 *The dockside of Constantinople*
Scene 2 *Aboard Sinbad's Ship*
Scene 3 *The Dreaded Sacrifice Stone on the Island of Nirvana*
Scene 4 *Outside of the Grotto of the Old-Man-of-the-Sea*
Scene 5 *The Grotto of the Living Statue*

Act 2

- Scene 1 *The nest of the Giant Rock Bird in the Emerald Valley*
Scene 2 *The Jungle of Man-Eating Plants*
Scene 3 *The Shrine of Love and the waters of Eternal Happiness*

Cast

Sinbad the Sailor	Josh Mensie
Mrs. Semolina Sinbad	Julie Froese
Tinbad the Tailor	Chris Koerner
Mustapha Kit-Kat	Shawn Edwards
The Caliph of Constantinople	David Rumping
The Princess Pearl	Amy Farrington
Sinistro	Matt Stansfield
Talida	Nicole Floyd
Crunchbones	Joe Riley
The Old-Man-of-the-Sea	Orville Crouch
Bludruncolda	Karen LaPlant
The Wazir of Constantinople	Leigh Tetrault
Coca	Rebecca Efken
Cola	Amanda Deardorff
Girl Native	Amy Sims
Sedan Puller and Man-Eating Plant	Marty Allen
Citizen and Statue	Alycia Zebrowski
Citizen and Statue	Cathleen Ortmann
Boy Native	Nathaniel Pingleton
Citizen and Statue	Lauren Charlton
Sedan Puller and Statue	Heather Timmerman



Personnel

Directors: Wes Robertson and Rebecca Ellison
Assistant to the Directors and House Manager: Jane Sullivan
Technical Director: Wes Robertson
Light Design and Background Scenic Design: Wes Robertson
Boat, Grotto, Fountain, Man-Eating Plant, and Rock Bird designed and built by Tom Schuessler
Stage Manager: Stephanie Huff
Light Board Controller: Adam Sandmeier
Sound Technicians: Dana Eaton and Joseph Bridges
Follow Spot Operator: George Hylton
Costume Coordinator: Rebecca Ellison
Music Consultants: Rebecca Ellison, Matt McCready, Chris Koerner and Stephanie Huff
Dance Choreography: Rebecca Ellison and Amy Sims
Running Crew: Nicholas Uhlmansick, Kim Neal and Wes Robertson
Set Construction: Joseph Bridges, Julie Froese, Stephanie Huff, George Hylton, Chris Koerner, Steven Manns, Kim Neal, Wes Robertson, Adam Sandmeier, Tom Schuessler, Nicholas Uhlmansick, Marty Allen
Programs, Signs and Flyers: Joyce Lehnhoff and Amy Coomes
Special Thanks to Tom Schuessler and Matt McCready